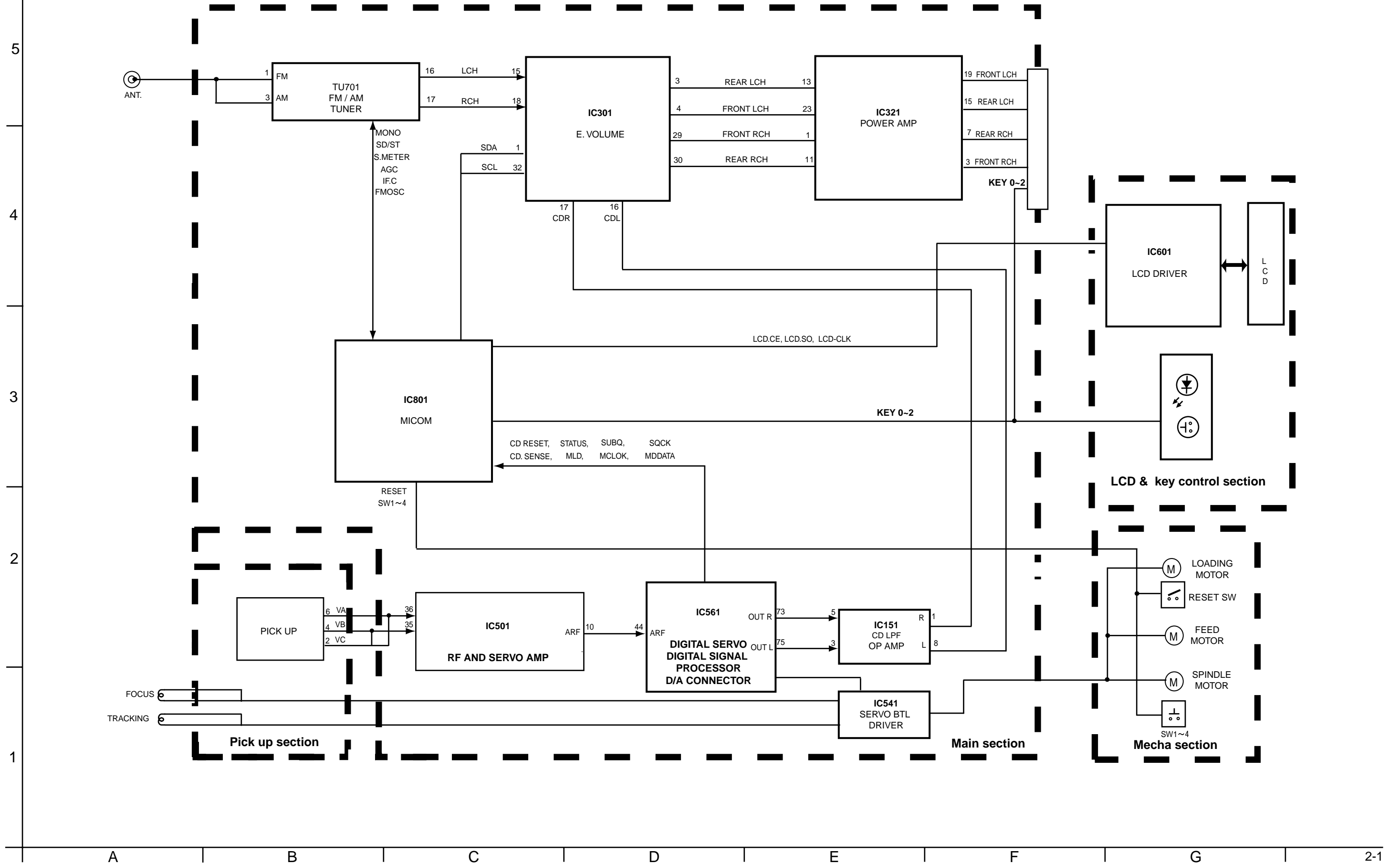


Block diagram



Standard schematic diagrams

Main amp. section

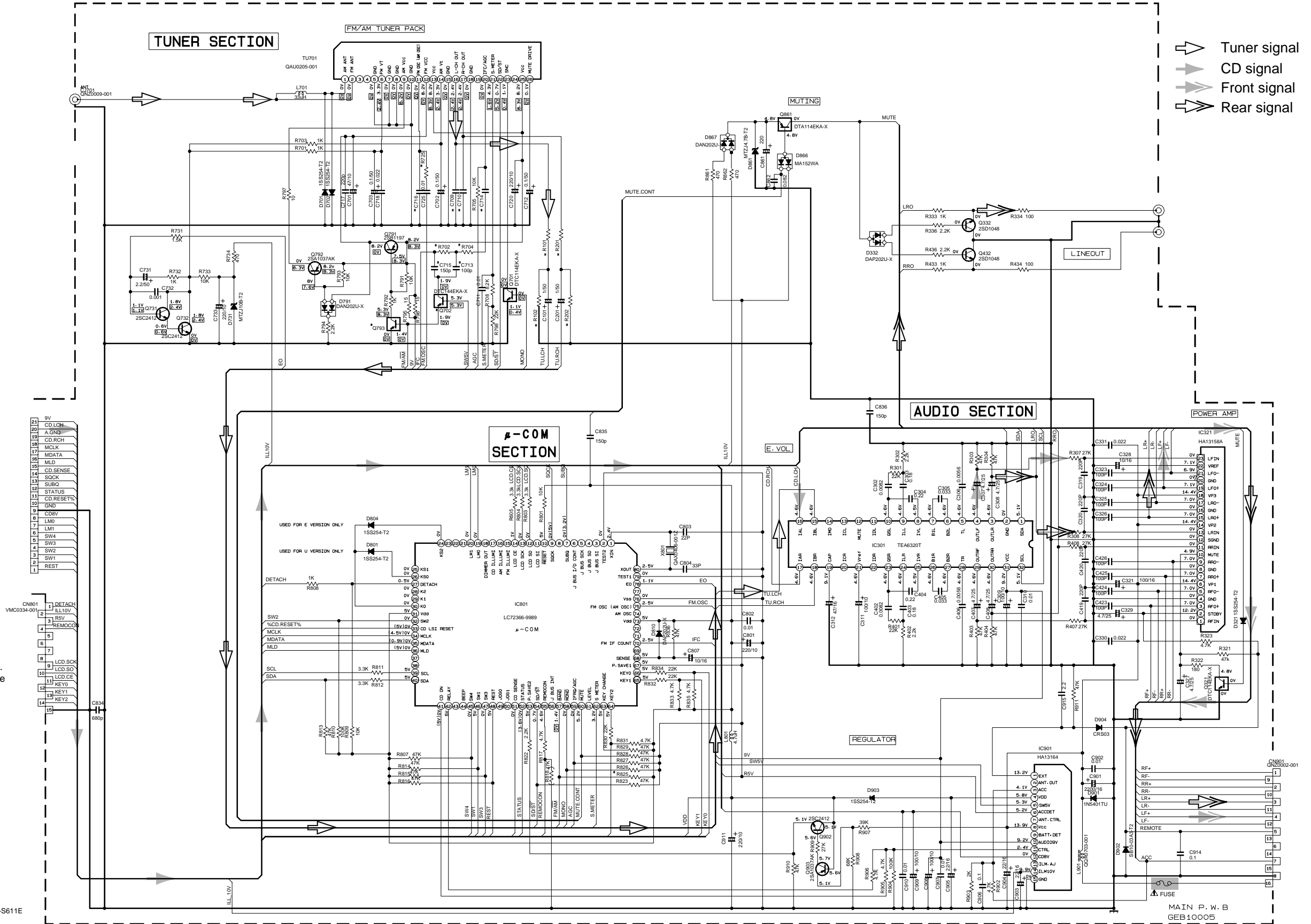
5

4

3

2

1



- ⇨ Tuner signal
- CD signal
- Front signal
- ⇨ Rear signal

Parts are safety assurance parts. When replacing those parts make sure to use the specified one.

REMARK 1

REF	VALUE	UNIT	REMARK
C700-C710	0.001	μF	0.001
R101-R103	2.2K	Ω	2.2K
R104-R105	5.1K	Ω	5.1K
R106	10K	Ω	10K
D804	1S5254-T2	DIODE	1S5254-T2
Q700	2SC2411	TR	2SC2411
C711-C715	100P	F	100P
C834	680P	F	680P
R801-R806	4.7K	Ω	4.7K
R807	47K	Ω	47K
R808	10K	Ω	10K
R809	100K	Ω	100K
R810	10K	Ω	10K
R811	10K	Ω	10K
R812	10K	Ω	10K
R813	10K	Ω	10K
R814	10K	Ω	10K
R815	10K	Ω	10K
R816	10K	Ω	10K
R817	10K	Ω	10K
R818	10K	Ω	10K
R819	10K	Ω	10K
R820	10K	Ω	10K
R821	10K	Ω	10K
R822	10K	Ω	10K
R823	10K	Ω	10K
R824	10K	Ω	10K
R825	10K	Ω	10K
R826	10K	Ω	10K
R827	10K	Ω	10K
R828	10K	Ω	10K
R829	10K	Ω	10K
R830	10K	Ω	10K
R831	10K	Ω	10K
R832	10K	Ω	10K
R833	10K	Ω	10K
R834	10K	Ω	10K
R835	10K	Ω	10K
R836	10K	Ω	10K
R837	10K	Ω	10K
R838	10K	Ω	10K
R839	10K	Ω	10K
R840	10K	Ω	10K
R841	10K	Ω	10K
R842	10K	Ω	10K
R843	10K	Ω	10K
R844	10K	Ω	10K
R845	10K	Ω	10K
R846	10K	Ω	10K
R847	10K	Ω	10K
R848	10K	Ω	10K
R849	10K	Ω	10K
R850	10K	Ω	10K
R851	10K	Ω	10K
R852	10K	Ω	10K
R853	10K	Ω	10K
R854	10K	Ω	10K
R855	10K	Ω	10K
R856	10K	Ω	10K
R857	10K	Ω	10K
R858	10K	Ω	10K
R859	10K	Ω	10K
R860	10K	Ω	10K
R861	10K	Ω	10K
R862	10K	Ω	10K
R863	10K	Ω	10K
R864	10K	Ω	10K
R865	10K	Ω	10K
R866	10K	Ω	10K
R867	10K	Ω	10K
R868	10K	Ω	10K
R869	10K	Ω	10K
R870	10K	Ω	10K
R871	10K	Ω	10K
R872	10K	Ω	10K
R873	10K	Ω	10K
R874	10K	Ω	10K
R875	10K	Ω	10K
R876	10K	Ω	10K
R877	10K	Ω	10K
R878	10K	Ω	10K
R879	10K	Ω	10K
R880	10K	Ω	10K
R881	10K	Ω	10K
R882	10K	Ω	10K
R883	10K	Ω	10K
R884	10K	Ω	10K
R885	10K	Ω	10K
R886	10K	Ω	10K
R887	10K	Ω	10K
R888	10K	Ω	10K
R889	10K	Ω	10K
R890	10K	Ω	10K
R891	10K	Ω	10K
R892	10K	Ω	10K
R893	10K	Ω	10K
R894	10K	Ω	10K
R895	10K	Ω	10K
R896	10K	Ω	10K
R897	10K	Ω	10K
R898	10K	Ω	10K
R899	10K	Ω	10K
R900	10K	Ω	10K

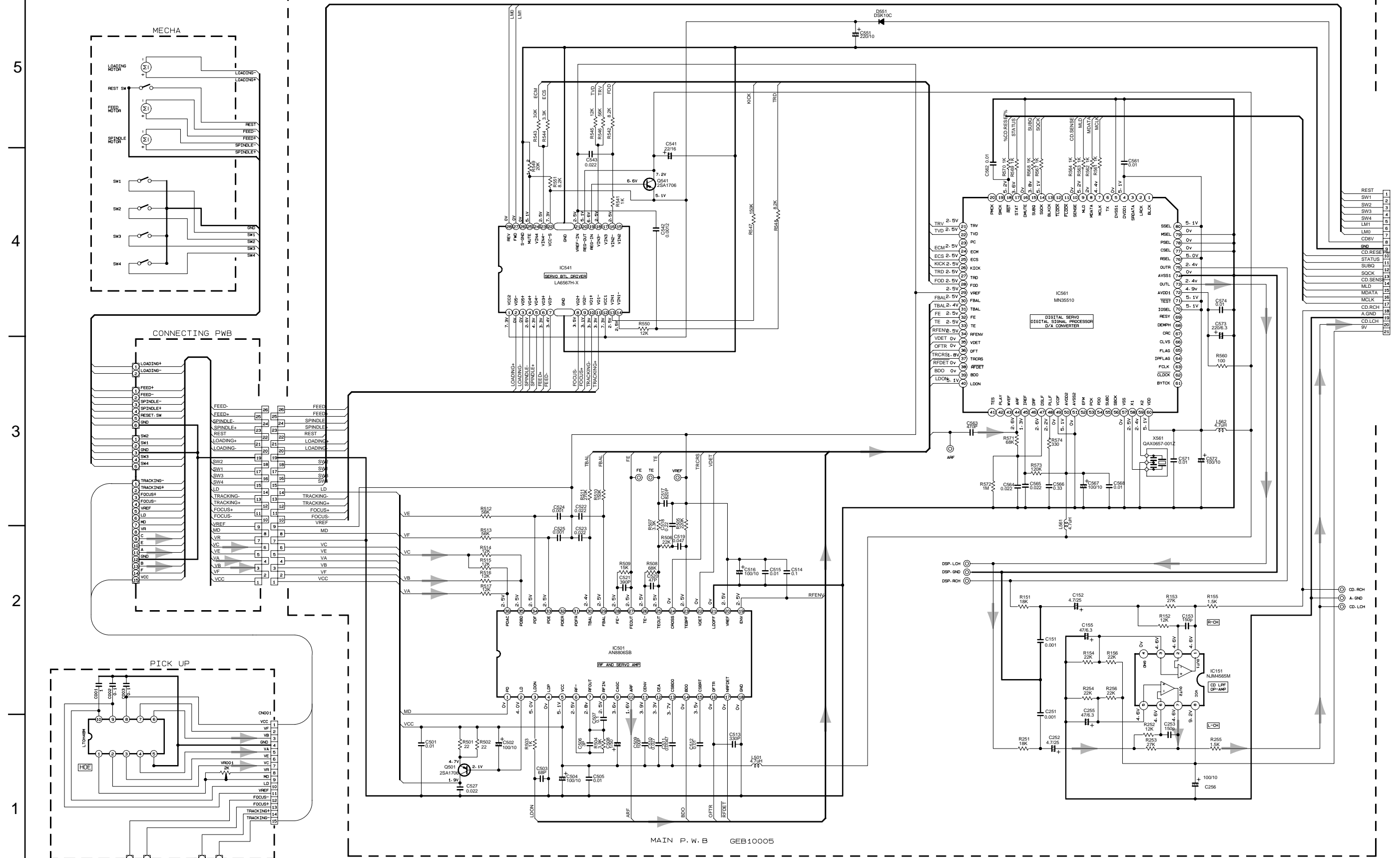
NOTES: VOLTAGE ARE DC-MEASURED WITH A DIGITAL VOLTMETER WITHOUT INPUT SIGNAL CONDITION
---FM (□) AM MODE () CD MODE ()

Note:KD-S570J KD-S575U KD-S620J KD-S611E
FSDH3165-005TW / 3165ma

MAIN P.W.B
GEB10005

CD servo & control section

CD SECTION

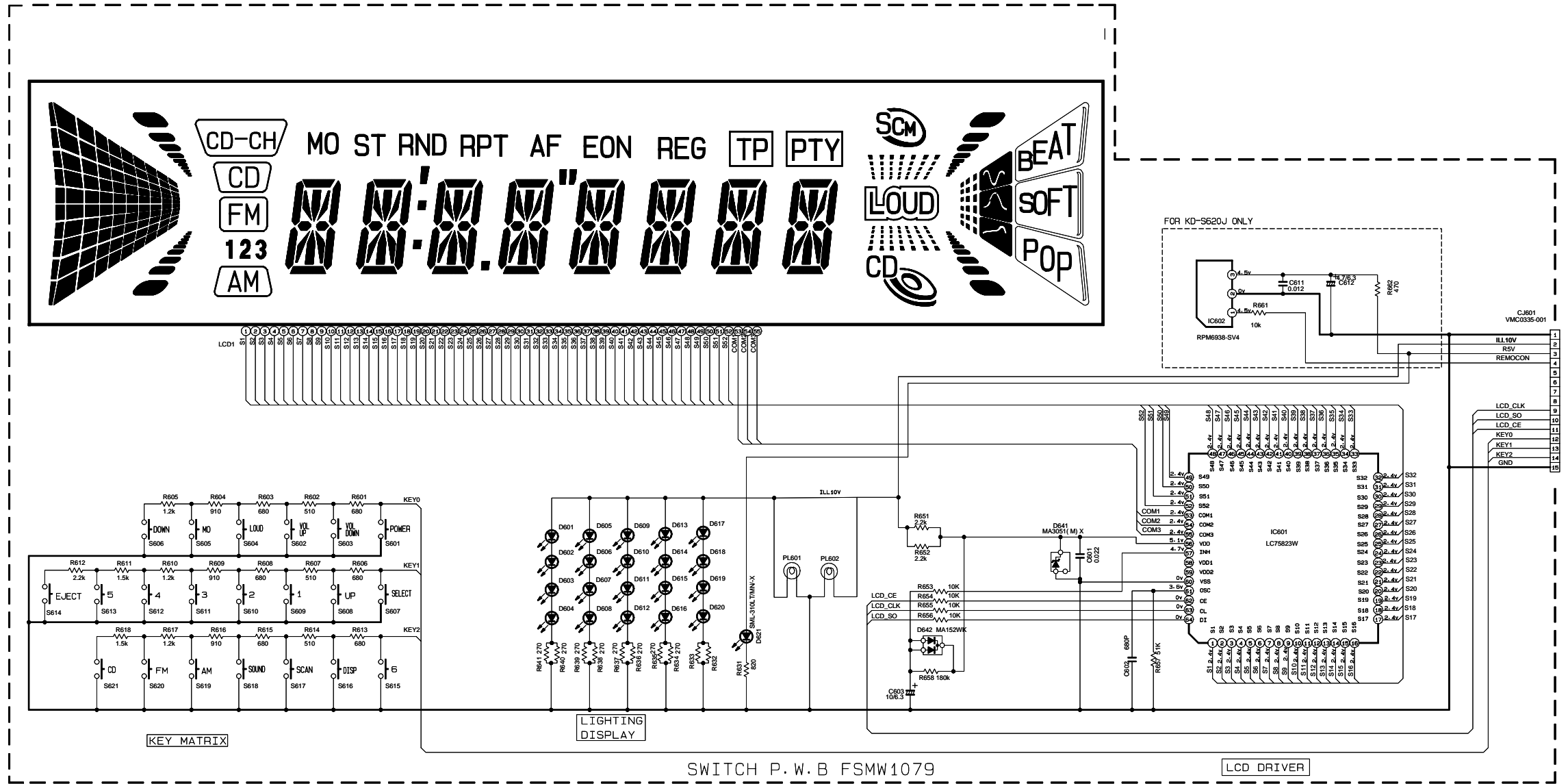


NOTE : VOLTAGE ARE DC-MEASURED WITH DIGITAL VOLT-METER WITHOUT INPUT SIGNAL CONDITION
 --- CD MODE

➔ CD signal

REST	1
SW1	2
SW2	3
SW3	4
SW4	5
LM1	6
LM0	7
CD5V	8
CD	9
CD RESE	10
STATUS	11
SUBQ	12
SQCK	13
CD SENS	14
M/D	15
MCLK	16
CD.RCH	17
A.GND	18
CD.LCH	19
9V	20
	21

■ LCD & key control section



FRONT CIRCUIT BOARD SECTION

	KD-S550	KD-S570	KD-S575/KD-S611
PL601	QLL0033-003	QLL0033-003	QLL0036-001
PL602	QLL0033-003	QLL0033-003	QLL0036-001
D617	SML-310V7/AK/-X		LNJ308681/1-3/X
D618			LNJ308681/1-3/X
D619			LNJ308681/1-3/X
R632	NFBAG2J-391X		NFBAG2J-271X
R633			NFBAG2J-271X
LD01	QLD0161-001		QLD0161-001
D001-D016			LNJ308681/1-3/X
S601-S621			NHW0124-001X

MODEL	SWITCH BOARD
KD-S570J	KD-SWPCB-1
KD-S620J	KD-SWPCB-2
KD-S575U Series/ KD-S611E Series	KD-SWPCB-8

NOTE VOLTAGE ARE DC-MEASURED WITH DIGITAL VOLTMETER WITHOUT INPUT SIGNAL CONDITION

5
4
3
2
1

A B C 2-4 D E F G H

Printed circuit boards

■ Main board

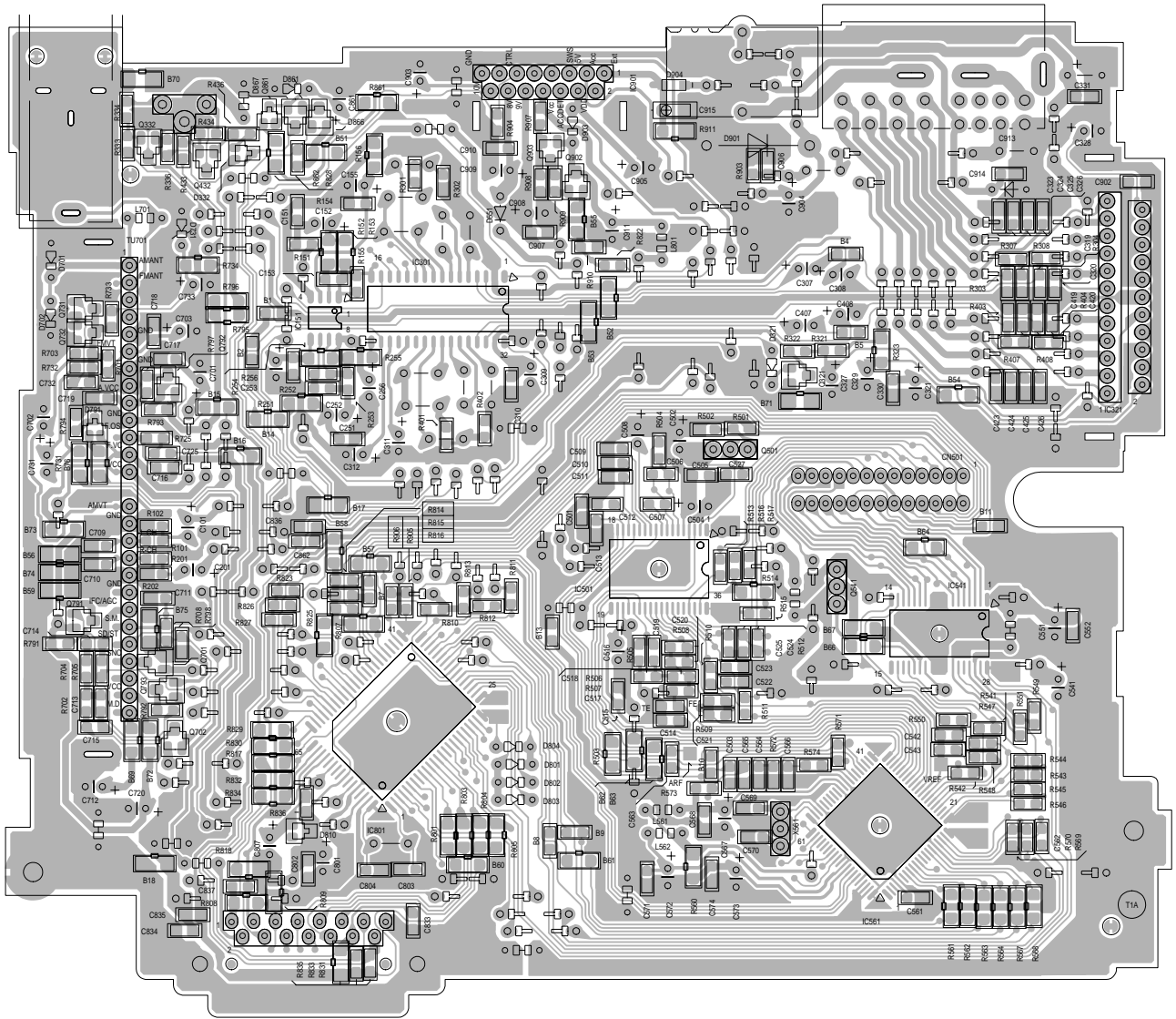
5

4

3

2

1



A

B

C

D

